

CayCare

Elder Care and
Senior Living Advisors

Free Placement Navigation®
Free In-Home Care Coordination
Free Pre-Planning



CALL US: 253-777-3804

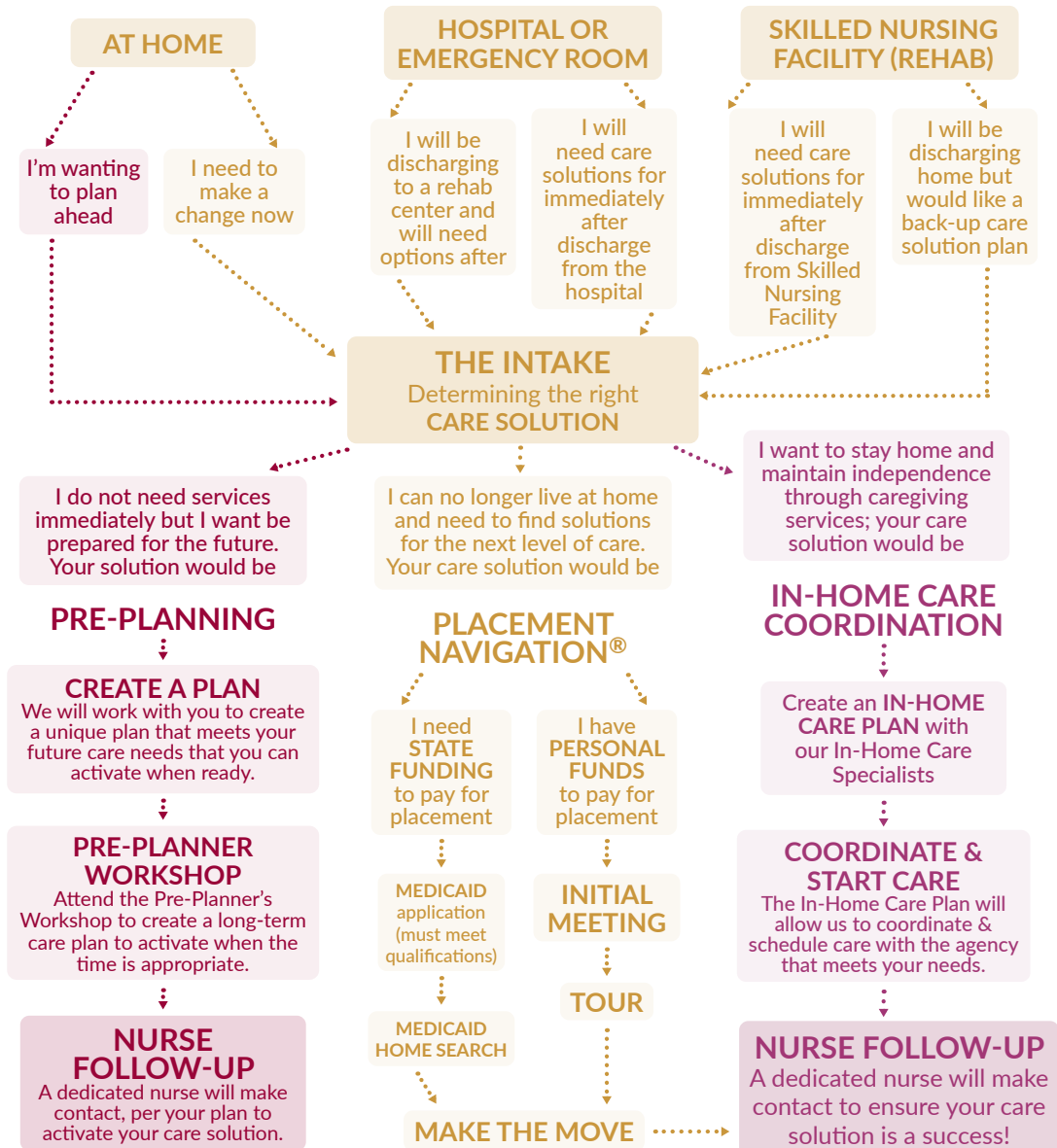


We are here for you.
Call us first.

Proudly serving our community since 2005
Online at: www.CayCare.com



WHERE ARE YOU NOW?



PLACEMENT NAVIGATION®

Types of placement & the cost of care.

LONG TERM SOLUTIONS

Placement provides individuals who have a progressive, debilitating illness or are limited by age support with care as needed.



Senior Living Option	Average Monthly Cost
Independent Living	\$3,000-\$4,500+
Assisted Living	\$3,500-\$5,500+
Adult Family Home	\$5,500-\$8,000+
Memory Care	\$5,000-\$10,000+
Skilled Nursing Facility - Long Term	\$7,800-13,500+

Independent Living:

- Non-licensed or regulated senior communities that are run similar to apartments. Medical or care staff are not employed.

Assisted Living:

- Senior apartments and/or cottages with employed caregiving staff. Cost is dependent on level of care.

Adult Family Home:

- Licensed and regulated private homes with up to 6 residents. Shared and private rooms are often available. Low to high level of care is supported with on site staff.

Memory Care Facility:

- Similar to Assisted Living with security & safety measures for individuals who may be exit seekers or have cognitive impairments, behaviors or high care needs.

Skilled Nursing Facility - Long Term Stay:

- Medical facility staffed for temporary (short stay) therapy/rehabilitation that reserves a percentage of rooms for long term residents. Care is similar to a hospital environment. Facilities often have shared rooms.

SHORT TERM SOLUTIONS

Prior to placement, a short term stay may be necessary. Short term stays may be at a Skilled Nursing Facility for rehabilitation or could be a Respite placement until a long term placement solution is found.

Short Term Living Option	Average Daily Cost
Skilled Nursing Short Term	\$350-\$650 per day
Respite (2 week min)	\$150-175+ per day

Skilled Nursing Facility - Rehabilitation/Short Term Stay:

- Medical facility staffed for temporary (short stay) therapy/rehabilitation. Care is similar to a hospital environment. Facilities often have shared rooms. Insurance and Private Pay funds accepted.

Respite:

- Short term placement in an Independent or Assisted Living setting. Rent & care is charged by a daily rate. Meals are included. No community fee.



HOSPICE OR COMFORT

Patients on **Hospice or Comfort Care** may benefit greatly from our services.

VETERAN'S SUPPORT:

We can provide resources for **Veteran's** benefits, long-term care insurance, legal assistance & more!



Disclaimer: This document contains information to help explain general differences, pricing, and types of care available. A specific home's details, rules or regulations are not contained in this document. This information is intended to help our clients better understand, in laymen's terms what the different facilities provide.

IN-HOME CARE COORDINATION

In-home care solutions & the costs.

WHEN YOU MIGHT NEED OUR EXPERTISE:

Multiple ER visits due to falls, weakness or health changes. Maintaining independence has become difficult. Overwhelmed by demands of being primary caregivers.



Care Option	Average Costs
In-Home Care	\$30-38+ per hour
24/7 In-Home Care	\$27-35+ per hour
Live in 24/7 Staff	\$350-450+ per day
Nurse Delegation	Call for details

In-Home Care:

- Private caregiving provided in your own home. Ranging from 4-24 hours. The caregivers are provided with a specific care plan catered to each individual.

24/7 In-Home Care:

- Around the clock caregivers that must have a dedicated sleep space with 6-7 hours uninterrupted sleep.

Live in 24/7 Awake Staff:

- Caregivers are needed awake around the clock due to problem behaviors or comfort care.

Nursing Delegation:

- When a physician specifically ordered medical task is required, specially trained caregivers can be delegated to perform these tasks. The average cost per day is \$2.49. A considerable savings over the nurse at \$200/hour.

"The greatest legacy one can pass... is not money or other material things, but rather a legacy of character and faith." —Billy Graham

PRE-PLANNING

Plan ahead now, activate later.

WHEN YOU MIGHT NEED OUR EXPERTISE:

When a legal representative is working on your behalf for financial planning, housing or care needs, consider planning ahead for care solutions



Pre-Planning Evaluation:

- One of our representatives will gather the correct information and connect you with our Pre-Planning Specialists. Our Pre-Planning Specialists will help create a plan and ensure that when the time is appropriate, whether now or in the future, you will be able to quickly activate it.

Create a Care Plan:

- When planning ahead a care plan can assist those around you to know your wishes about care and when to activate those wishes.

Care Analysis

- A specially trained registered nurse and geriatric care manager completes a care analysis with recommendations. There is a fee for this service. Contact our care management department for details.

Professional Care Management:

- A care manager can become an extension of the family or be the family in some cases. This is a customized service that can help evaluate care for a trust office taking the place of the family, organizing what is necessary. You can assign this service ahead of needing it or utilize right away. Go to caycare.com/caremanagement for more details.

Senior Living Resources:

- Our Pre-Planning Workshop is designed to help you get the resources you need to plan ahead or access now. Attend a Pre-Planning Workshop to find out more.

Our FREE Services

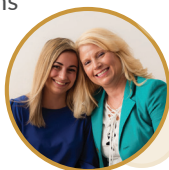
For Seniors & their Families

Placement Navigation®

Senior Living Options, Independent or Assisted Living, Adult Family Homes, Memory Care and more.

When you might need our expertise:

- In crisis situation, accommodations for emergency placement or care
- A diagnosis of a progressive or debilitating disease needing care
- A health crisis makes returning home no longer safe



In-Home Care Coordination

Non-Medical Care in Your Home, Care Planning, Nurse Delegation

When you might need our expertise:

- Multiple ER visits due to falls, weakness or health changes
- Maintaining independence has become difficult
- Overwhelmed by demands of being primary caregivers



Pre-Planning

Plan ahead now, activate later.

Pre-Planning ensures your family, finances & loved ones are protected.

When you might need our expertise:

- When a legal representative is working on your behalf for financial planning, housing or care needs, consider planning ahead for care solutions



CALL US: 253-777-3804

Fax: 253-777-3370

Proudly serving our community since 2005

www.CayCare.com